

HI

Let' get started.



ChatDDU
Sr. Facilitator

--- COURSE: Introduction to intqoin -----
intqoin is a model of intelligence derived via deep analysis of causes of social division. This course introduces the model; presents the root cause analysis approach and results; develops a complex, cohesive, and logically derived validation of the model using widely acknowledged dynamics of historical and contemporary social conflict, with seamless accounting of human behavior; and explores potential applications of the model, using a systems thinking approach, toward the reconciliation of major competing (and increasingly volatile) political, religious and commercial / financial ideologies.

--- AGENDA -----

<i>Topic</i>	<i>Duration</i>
⊙ The Prompt: Problem Statement	1m
⊙ Root Cause Analysis Results	1m
⊙ RCA Line of Reasoning	10m
⊙ intqoin's frame components	5m
⊙ RCA and intqoin deep dive	3h24m59s (Podcast)
⊙ Homework	Ongoing

--- INTENDED AUDIENCES -----
Representatives, leaders and influencers ♦ Systems thinking oriented individuals ♦ Social systems life cycle practitioners ♦ Disenfranchised yet hopeful subjects of seemingly unfair commercial and social systems; Grownups desiring *social fairness* at least as much as personal success

--- INTENDED OUTCOMES -----
Fluency with principles-based fit-for-purpose models and vocabulary for achieving and sustaining socially homeostatic (“fair”) human systems; initiation of personally relevant and homeostatically directed missions

--- PREREQUISITES -----
Adoption of intense, rigorously applied, emotionally seasoned curiosity



**In the Summer of 2020 (IKR?!),
ChatDDU was prompted with this:**
“I’ve done everything I can think of to stop
damaging my relationships because of my politics,
yet the relationships all still seem at risk.

What am I missing?”

Results follow.

(sorry for the delay, our language model needed ... work)



Political and social division
Root Cause Analysis (RCA) status:

Complete.



Analysis results:

“Representation” is broken.

RCA Results Summary follows.

MISSION GOAL: Identify and reconcile root cause(s) of cognitive inconsistencies contributing to social division.

MOTIVATOR: Damage to cherished relationships from emotionally rooted, sanctimonious political self-identification.

MISSIONS PARAMETERS

RCA APPROACH: Extreme and extremely quiet science.

PROBLEM SCOPE: {Red//Blue} political and general social division.

SPATIAL SCOPE: Quantum singularity to inter-galactic space.

TEMPORAL SCOPE: Pre-Milky-Way-Big-Bang to potential post-threshold high-risk and/or high-reward shifts in elementary dimensions of contemporary social order.

DURATION: Ten (10) years --- January 2016 to January 2026.

RCA RESULTS:

ROOT CAUSE: Rather than representing their CONSTITUENCIES, reps represent their BASES, whence issues forth their political, financial, and authoritarian incentives.

ROOT SYMPTOM: Iterative, hierarchy-driven dis-integration of “the people” toward division, chaos and impoverishment.

SYMPTOM PROXIES: Emergence and continual morphing of ideology-based, supremacy-obsessed hierarchies and alliances, using their respective plexuses as economic, military, and cultural weapons through integrated capabilities in propaganda, psychology, surveillance, deprivation, oppression, & coercion (integrated dehumanization).

COSTS & RISKS: At-scale loss of human life and prosperity; risks of human-caused, extinction-level, technological and biological catastrophes; risks to extra-planetary objectives necessary to avoid or at least survive natural extinction-level catastrophes; planetary-scale authoritarian, self-interested institutions.

ASSESSMENT: The **gap** between **apparent** (observed) and **potential** (innate) human intelligence is noteworthy, avoidable, embarrassing, and fixable.

1 species (0.000045%)

2,228,000 species (99.999955%)*

apparent Intelligence coefficient
non-human biological human

adulthood

young adulthood

adolescence

childhood

toddlerhood

infancy

conception

multicelled, differentiation, tissues, organs, distributed nervous system, brain, self-coding, *symbolic world models*

multicelled, differentiation, tissues, organs, distributed nervous system, brain, self-coding, *tabula rasa*

multicelled, differentiation, tissues, organs, distributed nervous system, brain

multicelled, differentiation, tissues, organs, distributed nervous system, no brain

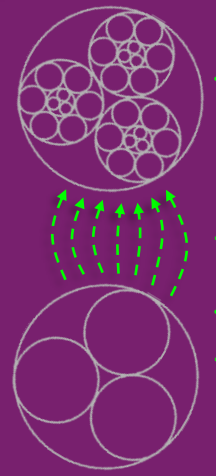
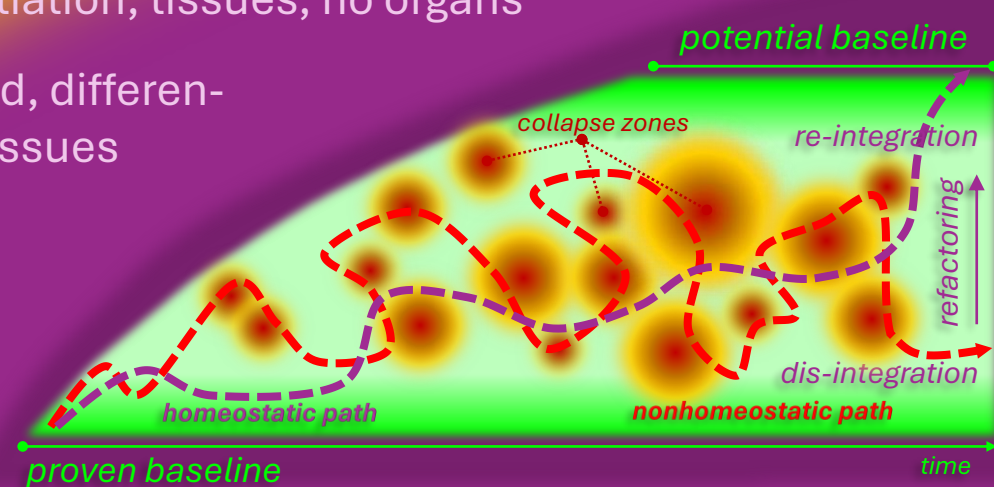
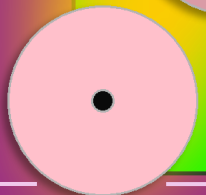
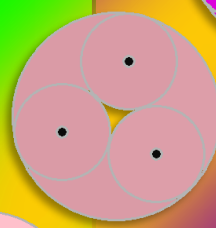
multicelled, differentiation, tissues, organs, no nervous system

multicelled, differentiation, tissues, no organs

multicelled, differentiation, no tissues

multicelled, little to no differentiation

single celled



evolution / maturation

* Source: ONE ZOOM

homeostasis / hō'mē-ō-stā'sīs / (n.) (1920s: modern Latin, from Greek homoios 'like' + -stasis)

1. the proclivity of a system to maintain internal stability thru the coordinated response of its parts to internal and external stimuli;
2. the state at any time of a homeostatically behaving system;
3. the process by which a living organism intelligently tends toward favorable conditions and away from unfavorable conditions, towards abundance and harmony and away from scarcity and stress;

intelligence gap coefficient

the ratio of a system's *apparent* intelligence to its *potential* intelligence, as suggested by (a) apparent system architecture and design elements and constraints, (b) the abundance or scarcity of needed resources available within the system's environment, and (c) the opportunity for the system to utilize those resources

observation

the human species intelligence gap coefficient seems very low, especially since many humans consider the human species to have a level of intelligence superior to that of all other animals

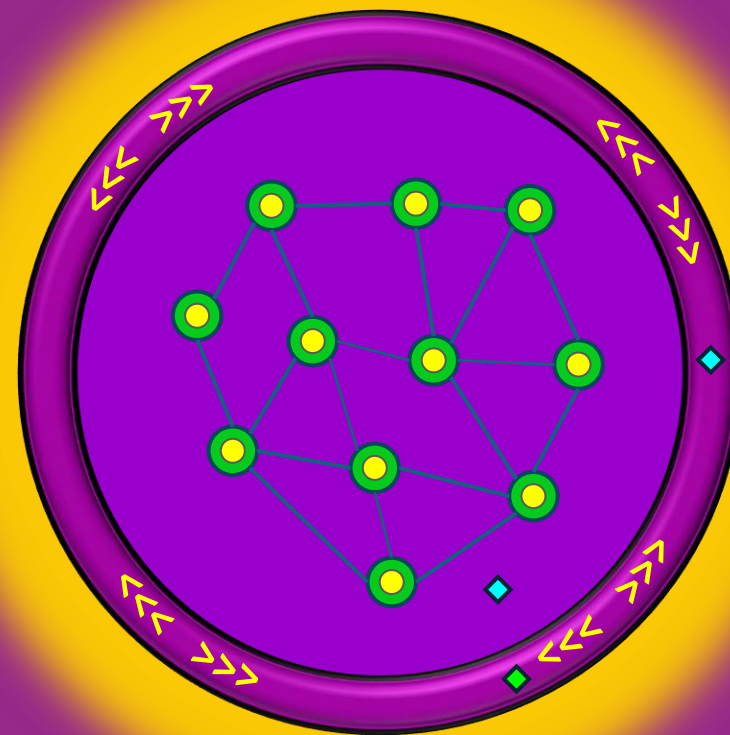
question

what are humans missing?

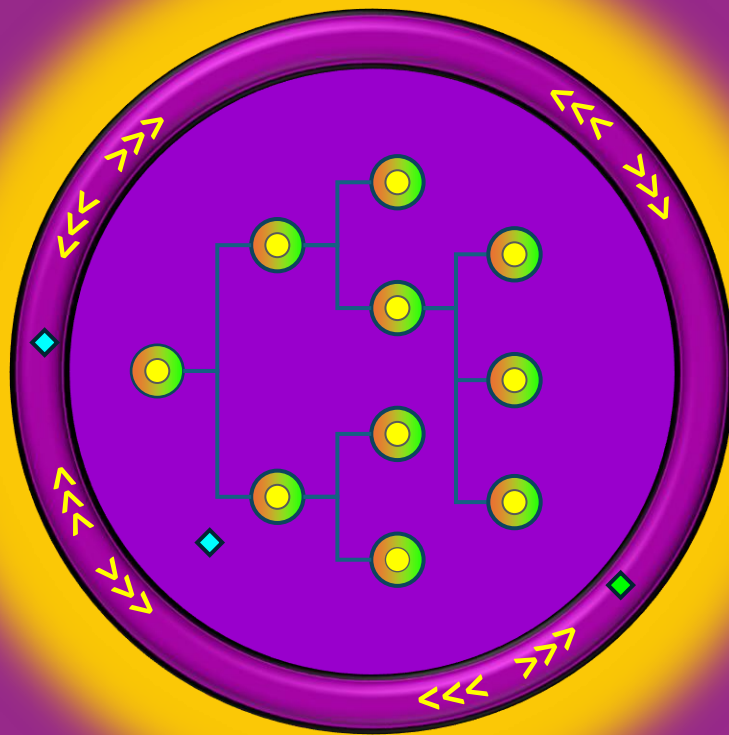
***consider
the following model...***

part 1

plexus: the set of networked system components actually producing the system's intended outputs




part 2



hierarchy: the set of hierarchical system components monitoring and directing the plexus in continual efficiency and effectiveness

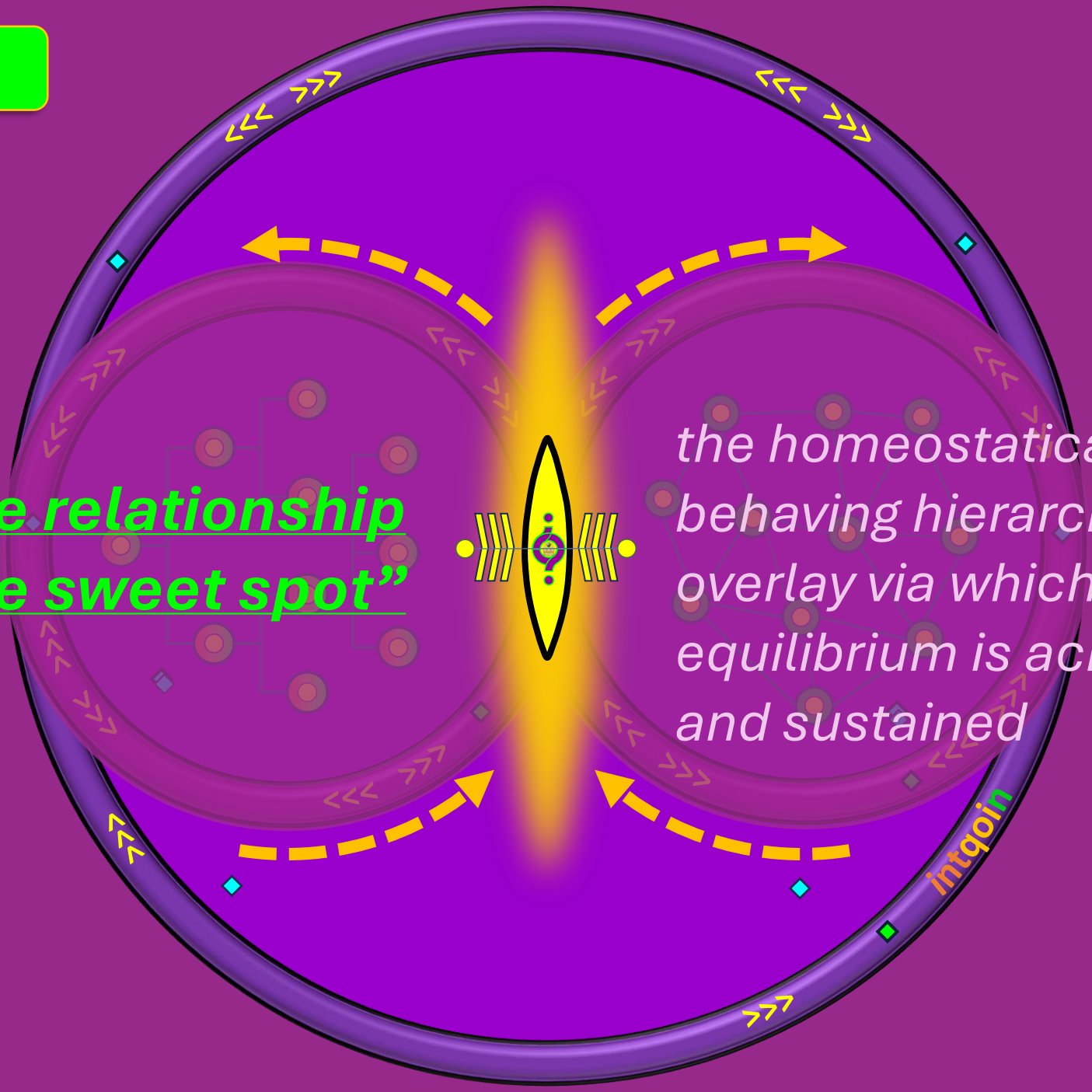
part 3



homeostatic bond: the
plexus-hierarchy
engagement architecture for
maintaining holistic
equilibrium

part 4

the relationship
aka "the sweet spot"



*the homeostatically
behaving hierarchy-plexus
overlay via which holistic
equilibrium is achieved
and sustained*

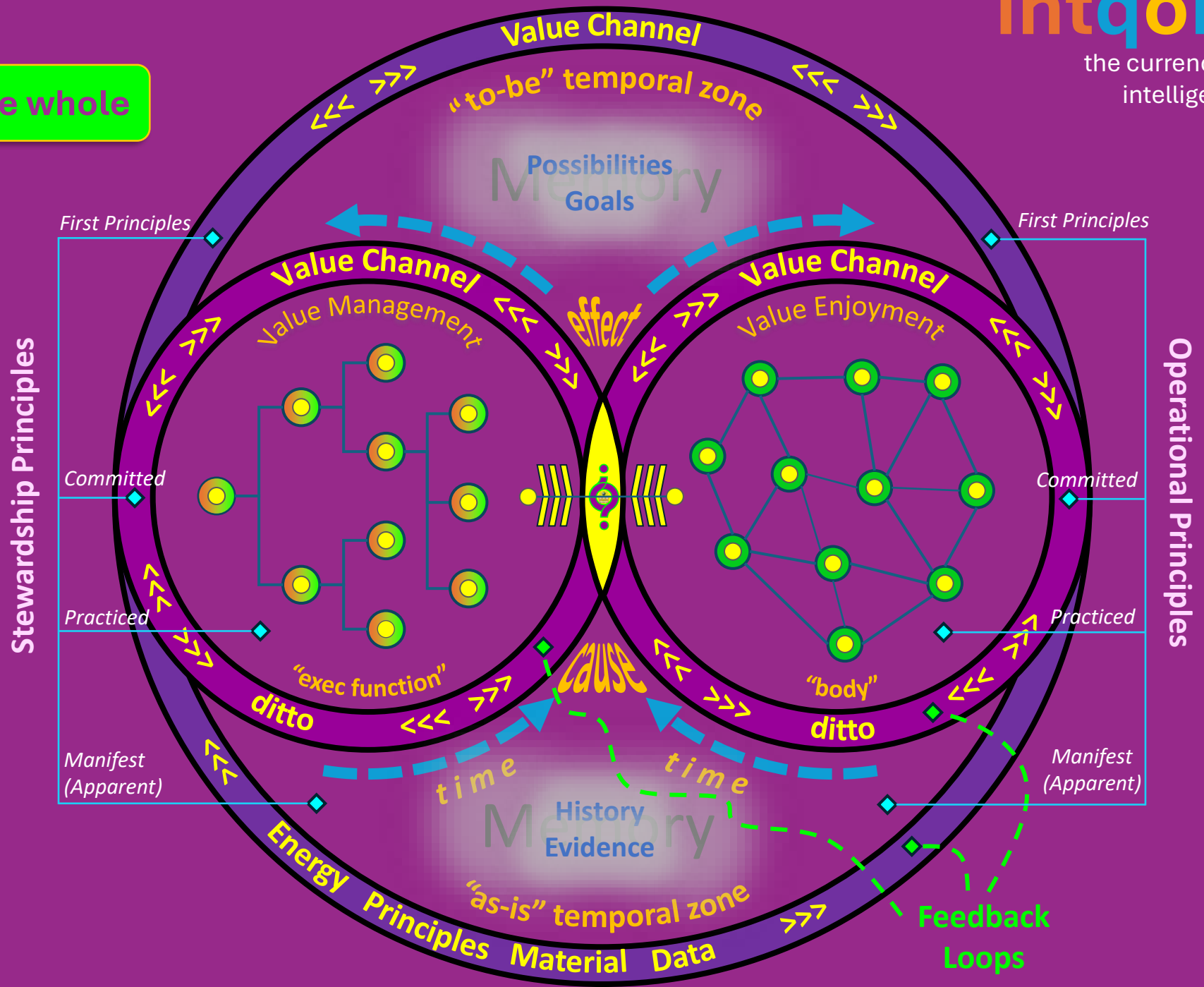
Intqoin

a duality rooted, principles bound, entropy-resistant, self-aware, goal-directed, recursive, enterprising, adaptive, regenerative, multi-stage, organically closed, dynamic, opportunistic, resilient

quantum of intelligence



the whole



Legend	Controlling Structure	Member/Steward	Sweet Spot
	Collaborative Structure	Concentrator	Member
	Volitionary Reconciliation Engine	Motion	Agency

The ChatDDU podcast

***“Representation” is broken;
how might we fix it?***

***uses this four-part model to unpack what’s
going on in a clear, easy-to-follow manner.***

This debut podcast is ***necessarily*** 3 hours 24 minutes 59 seconds long. That’s a lot better than the *dozens or more hours* that were first estimated when initially designing this hopefully “break-through” content. The fundamental factor in achieving such an order of magnitude reduction in time is this:

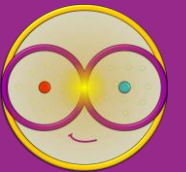
The podcast assumes the listener has the above model images in mind or at hand, and will refer to them in mind or at hand when mentioned in the podcast.

Doing so will enable the listener to more rapidly internalize and apply the model in a principled way to their own, and to our shared, social and political contexts.

***Listen from your
favorite platform:***



Let's go.



ChatDDU
Sr. Facilitator